

# JABIRU AIRCRAFT PTY LTD

P.O. Box 5792  
Bundaberg West  
Queensland, Australia.

Phone: +61 7 4155 1778  
Fax: +61 7 4155 2669  
Email: info@jabiru.net.au

## SERVICE BULLETIN: JSB 012-9

Issue: 9

Date: 30<sup>th</sup> November 2022

Subject: Jabiru Engine Flywheel Attachment

Issue	Reason for Issue	Issue Status
1	Original Issue	CANCELLED
2	Update for later engine configurations, change inspection intervals	CANCELLED
3	Update for later engine configurations, introduce Nordloc washers	CANCELLED
4	Update for later engine configurations, introduce "X" & "Y" drive plate flywheel.	CANCELLED
5	Update for overhauling older engines – introduce Nordloc washers	CANCELLED
6	Update to include the 5100 engine	CANCELLED
7	No changes – clarification for Gen 4 engines	CANCELLED
8	Clarified flywheel bolt change procedure.	CANCELLED
9	Exclude 10 pole engine form Bulletin	Current

Changes in red

## 1 Table of Contents

1	TABLE OF CONTENTS .....	1
2	APPLICABILITY .....	2
3	BACKGROUND.....	2
3.1	JSB012 ISSUE 9 .....	2
3.2	GENERAL .....	2
3.3	POTENTIAL CAUSES.....	2
4	RECOMMENDATIONS: .....	4
4.1	PROPELLER INSTALLATION .....	4
4.2	PROPELLER STRIKE .....	4
4.3	UPGRADE AT ENGINE OVERHAUL.....	4
4.4	CONFIGURATION NOTES:.....	5
4.5	2200 ENGINES UP TO S/No. 436 (1/4" FLYWHEEL SCREWS) .....	6
4.6	2200 ENGINES S/No. 2058 TO 2731. 3300 S/No. 837 TO 1521 (5/16" SCREWS & DOWELS) .....	6
4.7	2200 ENGINES S/No. 2732 TO 3533. 3300 S/No. 1522 TO 2445 (STEEL CENTRE – "STARFISH" 5/16" SCREWS AND DOWELS) .....	7
4.8	2200 ENGINES S/No. 3534 TO 3811. 3300 S/No. 2446 TO 2768 (STEEL CENTRE – "STARFISH" 3/8" SCREWS AND DOWELS) .....	7
4.9	2200 AND 3300 ENGINES UPGRADED (SOLID CENTRE, "X" & "Y" DRIVE PLATE FLYWHEEL – "GEN 4" 5/16" SCREWS AND DOWELS).....	7
4.10	2200 ENGINES S/No. 3811 AND ABOVE (GEN 4). 3300 S/No. 2768 AND ABOVE (GEN 4). (SOLID CENTRE, "X" & "Y" DRIVE PLATE FLYWHEEL – "GEN 4" 3/8" SCREWS AND DOWELS) .....	7
4.11	5100 ENGINES ALL SERIAL NUMBERS (5/16" SCREWS WITH OR WITHOUT DOWELS) .....	8
	COMPLIANCE:.....	8
4.12	ENGINES WITH 1/4" FLYWHEEL SCREWS .....	8
4.13	ENGINES WITH 5/16" FLYWHEEL SCREWS AND NO DOWELS.....	8
4.14	ENGINES WITH 5/16" FLYWHEEL SCREWS AND DOWELS .....	8
4.15	ENGINES WITH "STARFISH" ADAPTOR, 5/16" SCREWS AND DOWELS.....	8
4.16	ENGINES WITH "STARFISH" ADAPTOR, 3/8" SCREWS AND DOWELS.....	8
4.17	ENGINES WITH GEN4 "X" & "Y" DRIVE PLATE FLYWHEEL, 5/16" SCREWS AND DOWELS.....	8
4.18	ENGINES WITH GEN4 "X" & "Y" DRIVE PLATE FLYWHEEL, 3/8" SCREWS AND DOWELS.....	9
5	PROCEDURES.....	9

# Jabiru Service Bulletin: Jabiru Engine Flywheel Attachment

JSB 012-9

30<sup>th</sup> November 2022

5.1	NORDLOC WASHERS .....	9
5.2	LOCTITE 620 NOTES.....	10
5.3	PROCEDURE – CHECK FLYWHEEL SCREWS.....	10
5.4	PROCEDURE – REPLACE LOCTITE RETAINED FLYWHEEL SCREWS WITH NORDLOC WASHERS RETAINED FLYWHEEL SCREWS, IN-SITU. ....	10
5.5	PROCEDURE – REPLACE FLYWHEEL SCREWS (ENGINES UPGRADED AS PER 5.4 ) .....	11
5.6	GENERAL .....	11
5.7	MANUALS .....	12
5.8	GENERAL ENGINE MAINTENANCE NOTES .....	12
6	REPORTING .....	12

## 2 Applicability

All Jabiru 2200 engines  
All Jabiru 3300 engines  
All Jabiru 5100 engines

Note that this Bulletin also applies to engines operating in Light Sport Aircraft categories.

## 3 Background

### 3.1 JSB012 Issue 9

In Issue 8 the use of steel wear plates was included for use with aluminium centre flywheels and nordloc washers. However, the use of wear plates with Nordloc washers is not suitable for the early 10 pole flywheel types and is excluded from this service bulletin.

JSB012-8 (Issue 8) is **cancelled** and must not be referred to.

### 3.2 General

The flywheels of Jabiru Engines are retained to the crankshaft by six cap screws. In early 2200 engines these screws were ¼”, while later 2200 engines and all 3300 engines use 5/16” screws and later still 2200 and 3300 use 3/8” capscrews. Gen 4 2200 and 3300 use the same crankshaft and connection but with “X” and “Y” drive plate respectively - a lighter weight flywheel. All 5100 engines use six 5/16” capscrews.

If the flywheel screws fail the flywheel will partially or completely separate from the crankshaft. This results in a loss of ignition timing and/or valve timing, damage to the alternator and ignition coils and a stoppage of the engine.

### 3.3 Potential Causes

There are several conditions which can be attributed to cause of flywheel retaining screws to fail. These include:

**Excess Lubrication**            The connection between the crankshaft, crankshaft gear and flywheel relies on friction to transmit torque from one part to another. Excess oil in the flywheel attachment from leaky seals etc can reduce the friction between the parts and so reduce the strength of the connection.

**Prop strike**                      Any time when the tip of the propeller touches another object it will send a spike of torque along the crank which can overload the flywheel screws.

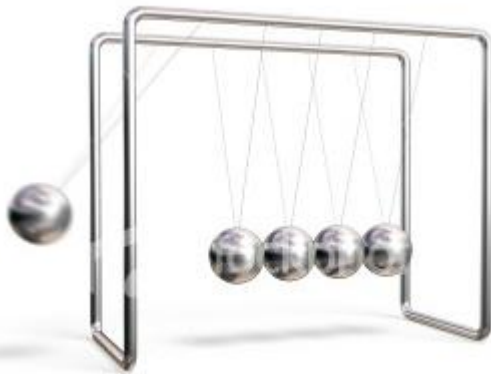
## Jabiru Service Bulletin: Jabiru Engine Flywheel Attachment

JSB 012-9

30<sup>th</sup> November 2022

Abrupt Engine Stoppage	An engine which has experienced an abrupt stoppage will have experienced an overload on the flywheel screws.
Propeller Bolt Tension	If the propeller bolts lose tension the propeller may move and fret on the mounting flange of the engine. This results in an increase in the vibration being reflected back down the crankshaft and can damage the flywheel mounting screws.
Propeller Balance	An out-of-balance propeller creates additional vibration over and above that which is considered normal.
Propeller Condition	A propeller with uneven pitch or one damaged blade creates additional vibration.
Propeller Drive Bushes	If the drive spigots (also known as drive bushes) which go through the engine flange into the propeller are a loose fit in the propeller then the propeller will not be properly restrained – which has the same effect as running with insufficient propeller bolt tension. (Note that this generally only occurs on propellers which have been previously damaged by running with badly tensioned propeller bolts).
Propellers	There have been cases recorded of damage to the flywheel screws due to the installation of a non-approved propeller installation with poor vibrational characteristics.
Propeller Flange	Jabiru Aircraft propeller flanges are made to exacting tolerances. Use of a different, non-approved propeller flange is strongly discouraged. Inspection of non-OEM flanges fitted to some engines has shown poor machining – leading to the propeller running off-axis or out of true, creating extra vibration.
Damaged Flywheel	Once a flywheel has run with loose or damaged screws it is likely that the flywheel itself will have been damaged – the loose screws move in the flywheel, elongating the holes. In extreme cases this can lead to repeated screw breakages and the need to replace the flywheel.

As with any aero engine, the propeller fitted to Jabiru Engines is vital in helping to absorb engine vibrations. If the connection between the engine and propeller deteriorates or the propeller runs less smoothly for any reason, damaging vibrations can be applied to the crankshaft. This explains why most of the items on the list above deal with the propeller despite being at the opposite end of the crankshaft to the flywheel. The effects being discussed can be visualized as being similar to Newton's Cradle (Figure 1) – a ball hits at one end and in response another ball flies off at the opposite end. In the case of the engine, any vibration or impact at the propeller passes through the crank and tries to fling the flywheel off.



**Figure 1 – Newton’s Cradle**

Jabiru Service Bulletin JSB 014 was also raised to coincide with the original issue of this bulletin. Its purpose is to increase owner awareness of the design and maintenance requirements of propellers. A loose or rough-running propeller will cause engine damage no matter how robust the engine design. Because of this, the following bulletin acts in concert with JSB 014 – failure to follow the recommendations of **either** bulletin will result in an incomplete approach which does not deliver the improvements to operating safety intended.

## **4 Recommendations:**

### **4.1 Propeller Installation**

Jabiru Service Bulletin JSB 014 provides information and recommendations for installing and maintaining all propeller types.

Note: The directions of this Service Bulletin do not negate the flywheel bolt maintenance requirements for aircraft with **non-approved** propellers. See Maintenance manual or JSB014.

**Jabiru Aircraft consider compliance with JSB 014 mandatory for all aircraft being used for air work (such as training, hire & glider towing).**

### **4.2 Propeller Strike**

Jabiru Aircraft require that all the flywheel screws be replaced whenever the aircraft has experienced any propeller strike. The propeller flange must also be checked for run-out, and in some cases the crankshaft must be replaced. Refer to the current engine maintenance and overhaul manuals on the Jabiru website <https://jabiru.net.au/service/manuals/> for details. Where in doubt, contact Jabiru Aircraft or our local authorised representative for advice.

### **4.3 Upgrade at Engine Overhaul**

Jabiru Aircraft recommend that all engines which remain with 1/4" flywheel attachment capscrews be updated to include 3/8" screws and flywheel dowels at the major overhaul (2000-hr TTIS overhaul).

Those engines currently with 5/16" cap screws need not be further upgraded to 3/8".

**All engines, except those with 10 pole alternators** must be changed to use Nordloc washers and **steel wear** plate at the next major overhaul. Any without dowels can be upgraded to include 6mm dowel pins, optionally, at the next major overhaul

Jabiru Aircraft is able to modify older crankshafts and mating parts to accommodate dowels and larger bolts.

# Jabiru Service Bulletin: Jabiru Engine Flywheel Attachment

JSB 012-9

30<sup>th</sup> November 2022

## 4.4 Configuration Notes:

The details given below are for the engine configuration at manufacture. Engines which have been overhauled or updated since manufacture may not conform to their original configuration.

Engines which have been updated since manufacture are to be treated as defined by their configuration – i.e. if for example, engine 22A-400 has been overhauled and upgraded to use 5/16” screws with dowels then the engine is to be treated as defined in Section 4.7.

All other engine models (2200B, 3300L etc.) are cross-referenced to the original “A” build number at Jabiru – i.e. a 2200B engine will have its original 2200A build number on file. Operators wishing to know their “A” serial number should contact Jabiru Aircraft or our local authorised representative. Alternatively the engine configuration can be determined by direct inspection of the engine.

**Table 1 - Engine flywheel configurations**

Configuration	S/No. Range	Required Action	Maintenance Schedule
1/4” Flywheel screws, 2200 only	001 - 436	Section 4.5	Section 4.12
5/16” Flywheel screws only – no dowels	2200; 437-2057 3300; 0-836	Section 4.5	Section 4.13
5/16” Flywheel screws with dowels	2200; 2058-2731 3300; 837-1521	Section 4.7	Section 4.14
5/16” Flywheel screws with dowels and “Starfish” flywheel adaptor	2200; 2732-3533 3300; 1522-2445	Section 4.8	Section 4.15
3/8” Flywheel screws with dowels and “Starfish” steel flywheel adaptor	2200; 3534 - 3811 3300; 2446 - 2768	Section 4.8	Section 4.16
Solid centre, “X” & “Y” drive plate Gen 4 flywheel with 5/16” flywheel screws and dowels	Available as an upgrade	Section 4.9	Section 4.17
Solid centre, “X” & “Y” drive plate Gen 4 flywheel with 3/8” flywheel screws and dowels.	2200; 3811 on 3300; 2768 on Available as an upgrade	Section 4.10	Section 4.18
5/16” Flywheel screws with or without dowels	5100 all S/No	Section 4.11	Section 4.14 or 4.15

# Jabiru Service Bulletin: Jabiru Engine Flywheel Attachment

JSB 012-9

30<sup>th</sup> November 2022

## 4.5 2200 Engines up to S/No. 436 (1/4" Flywheel Screws)

- Engines which have 1/4" screws may remain in service in their current configuration until major overhaul (2000-hr TTIS). During major overhaul the engine is to be updated by an Authorised Jabiru Engine maintainer. Refer to Section 4.3 above
- If the original 1/4" bolts are still in place, check the flywheel screws as detailed in Section 5.3. If any loose or broken screws are found, replace **all** the screws in accordance with the procedure given in Section 5.4.
- Maintain the engine in accordance with the instructions detailing flywheel connection maintenance from the latest issue of the Engine maintenance manual JEM0002
- **Flywheels with 10 pole stators cannot be upgraded to Nordloc washers and steel wear plate.**

## 2200 Engine S/No. 437 to 2057. 3300 Engine S/No. 0 to 836 (5/16" screws, no dowels)

- Engines which have 5/16" screws but no dowels may remain in service in their current configuration until major overhaul (2000-hr TTIS). During the major overhaul the engine is to be updated by an Authorised Jabiru Engine maintainer. Refer to Section 4.3 above.
- Check the flywheel screws as detailed in Section 5.3. If any loose or broken screws are found, replace **all** the screws in accordance with the procedure given in Section 5.4.
- Maintain the engine in accordance with the instructions detailing flywheel connection maintenance from the latest issue of the Engine maintenance manual JEM0002.
- **Flywheels with 10 pole stators cannot be upgraded to Nordloc washers and steel wear plate.**

## 4.6 2200 Engines S/No. 2058 to 2731. 3300 S/No. 837 to 1521 (5/16" screws & dowels)

- Engines which have 5/16" screws plus dowels may remain in service in their current configuration until major overhaul (2000-hr TTIS). During the major overhaul the engine may be updated by an Authorised Jabiru Engine maintainer. Refer to Section 4.3 above.
- At the next major overhaul change flywheel bolts to use Nordloc washers in accordance with the procedure in Section 5.4.
- Check the flywheel screws as detailed in Section 5.3. If any loose or broken screws are found, replace **all** the screws in accordance with the procedure given in Section 5.4.
- Maintain the engine in accordance with the instructions detailing flywheel connection maintenance from the latest issue of the Engine maintenance manual JEM0002.
- When upgraded to Nordloc washers a steel wear plate is required.

## Jabiru Service Bulletin: Jabiru Engine Flywheel Attachment

JSB 012-9

30<sup>th</sup> November 2022

### **4.7 2200 Engines S/No. 2732 to 3533. 3300 S/No. 1522 to 2445 (Steel Centre – “Starfish” 5/16” screws and dowels)**

- At the next major overhaul change flywheel bolts to use Nordloc washers in accordance with the procedure in Section 5.4.
- Check the flywheel screws as detailed in Section 5.3. If any loose or broken screws are found, replace **all** the screws in accordance with the procedure given in Section 5.4.
- Maintain the engine in accordance with the instructions detailing flywheel connection maintenance from the latest issue of the Engine maintenance manual JEM0002

### **4.8 2200 Engines S/No. 3534 to 3811. 3300 S/No. 2446 to 2768 (Steel Centre – “Starfish” 3/8” screws and dowels)**

- At the next major overhaul change flywheel bolts to use Nordloc washers in accordance with the procedure in Section 5.4.
- Check the flywheel screws as detailed in Section 5.3. If any loose or broken screws are found, replace **all** the screws in accordance with the procedure given in Section 5.4.
- Maintain the engine in accordance with the instructions detailing flywheel connection maintenance from the latest issue of the Engine maintenance manual JEM0002.

### **4.9 2200 and 3300 engines upgraded (Solid centre, “X” & “Y” drive plate flywheel – “Gen 4” 5/16” screws and dowels)**

- Check the flywheel screws as detailed in Section 5.3. If any loose or broken screws are found, replace **all** the screws in accordance with the procedure given in Section 5.4.
- At the next major overhaul change flywheel bolts to use Nordloc washers in accordance with the procedure in Section 5.4.
- Maintain the engine in accordance with the instructions detailing flywheel connection maintenance from the latest issue of the Engine maintenance manual JEM0002 (Gen 3 engines) and JEM0005 (Gen 4 engines)
- Must have steel wear plate under Nordloc washers.

### **4.10 2200 Engines S/No. 3811 and above (Gen 4). 3300 S/No. 2768 and above (Gen 4). (Solid centre, “X” & “Y” drive plate flywheel – “Gen 4” 3/8” screws and dowels)**

- Maintain the engine in accordance with the instructions detailing flywheel connection maintenance from the latest issue of the Engine maintenance manual JEM0005 (Gen 4 engines).
- Must have steel wear plate under Nordloc washers.

# Jabiru Service Bulletin: Jabiru Engine Flywheel Attachment

JSB 012-9

30<sup>th</sup> November 2022

## 4.11 5100 Engines all Serial numbers (5/16" screws with or without dowels)

- Check the flywheel screw tensions as detailed in Section 5.3. If any loose or broken screws are found, replace **all** the screws in accordance with the procedure given in Section 5.4.
- Maintain the engine in accordance with the instructions detailing flywheel connection maintenance from the latest issue of the Engine maintenance manual JEM0002. Note that this manual now has precedence over JEM5101
- When upgraded to Nordloc washers a steel wear plate is required.

## Compliance:

Where calendar time spans are given below, the start date is taken to be the date of issue of the previous JSB012-7 Service Bulletin – 6<sup>th</sup> November 2020. Note that if compliance has already been shown for JSB012-8 then compliance is extended to JSB012-9 no further action is required.

**Note that Jabiru Aircraft consider the recommendations below mandatory for all aircraft being used for training, hire & glider towing.**

## 4.12 Engines with 1/4" Flywheel Screws

- a) Refer to Jabiru Service Bulletin JSB 014 and treat the propeller installation as detailed.
- b) Maintain the engine in accordance with the latest issue of JEM0002.
- c) At major overhaul (2000-hr TTIS) upgrade the engine as detailed in Section 4.3.

## 4.13 Engines with 5/16" Flywheel Screws and No Dowels

- a) Refer to Jabiru Service Bulletin JSB 014 and treat the propeller installation as detailed.
- b) Maintain the engine in accordance with the latest issue of JEM0002.
- c) At major overhaul (2000-hr TTIS) upgrade the engine as detailed in Section 4.3.

## 4.14 Engines with 5/16" Flywheel Screws and Dowels

- a) Refer to Jabiru Service Bulletin JSB 014 and treat the propeller installation as detailed.
- b) Maintain the engine in accordance with the latest issue of JEM0002.
- c) At major overhaul (2000-hr TTIS) upgrade the engine as detailed in Section 4.3.

## 4.15 Engines with "Starfish" Adaptor, 5/16" Screws and Dowels

- a) Refer to Jabiru Service Bulletin JSB 014 and treat the propeller installation as detailed.
- b) Maintain the engine in accordance with the latest issue of JEM0002.
- c) At major overhaul (2000-hr TTIS) upgrade the engine as detailed in Section 4.3.

## 4.16 Engines with "Starfish" Adaptor, 3/8" Screws and Dowels

- a) Refer to Jabiru Service Bulletin JSB 014 and treat the propeller installation as detailed.
- b) Maintain the engine in accordance with the latest issue of JEM0002.
- c) At major overhaul (2000-hr TTIS) upgrade the engine as detailed in Section 4.3.

## 4.17 Engines with Gen4 "X" & "Y" drive plate flywheel, 5/16" Screws and Dowels

- a) Refer to Jabiru Service Bulletin JSB 014 and treat the propeller installation as detailed.



## Jabiru Service Bulletin: Jabiru Engine Flywheel Attachment

JSB 012-9

30<sup>th</sup> November 2022

- b) Maintain the engine in accordance with the latest issue of JEM0002 (Gen 3) and JEM0005 (Gen 4).
- c) At major overhaul (2000-hr TTIS) upgrade the engine as detailed in Section 4.3.

### 4.18 Engines with Gen4 “X” & “Y” drive plate flywheel, 3/8” Screws and Dowels

- d) Refer to Jabiru Service Bulletin JSB 014 and treat the propeller installation as detailed.
- e) Maintain the engine in accordance with the latest issue of JEM0002 (Gen 3) and JEM0005 (Gen 4).

## 5 Procedures

### 5.1 Nordloc washers

This service bulletin also acts to inform maintainers and operators of a design change to the flywheel connection which **must** be implemented on existing engines whenever flywheel bolts are replaced (i.e. at the intervals specified in JEM0002 or at overhaul).

Flywheel screws must now be installed using Nordloc washers (replacing the previous installation which used either plain or Belleville washers). Jabiru engines of any and all flywheel configurations (as defined in Table 1) should now use Nordloc washers. These washers are easily identified via visual inspection as shown below in Figure 2.

Refer to the Legacy Jabiru Engine overhaul manual JEM0001 and the Gen 4 Jabiru Engine overhaul manual JEM0002 (always check for the latest revision) for the installation procedure of flywheel capscrews using Nordloc washers. The major difference in installation is that bolts installed with Nordloc washers **must not be installed with Loctite**. The torque setting is also different for capscrews installed with these washers.

When Nordloc washers are used on an aluminium surface a steel plate must be used to protect the aluminium surface. These are available from Jabiru.

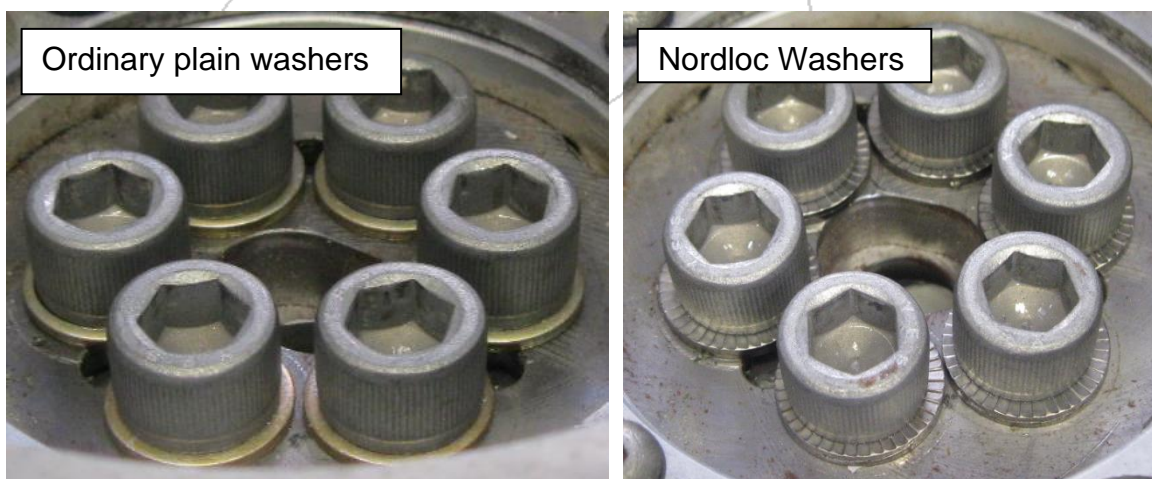


Figure 2 - Plain washers compared to Nordloc washers (flywheel with steel centre).

## 5.2 Loctite 620 Notes

- As previously stated Loctite 620 MUST NOT be used on flywheel attachment bolts installed with Nordloc washers.
- Removing bolts which have been retained with Loctite 620 can normally be achieved by heating the bolt to over 150°C using a pencil-point gas burner. Minimise direct heat applied to the head of the screw as this can weaken the drive socket – direct heat towards the thread as much as possible.

### **Warning**

**Take great care when applying heat that alternator or ignition magnets are not inadvertently overheated. This can cause them to demagnetise and cease functioning.**

## 5.3 Procedure – Check Flywheel Screws

- i) Conduct flywheel screw inspections using the procedure and interval specified in the engine maintenance manual JEM0002(Gen 3) or JEM0005 (Gen 4) (check for latest issue).

## 5.4 Procedure – Replace Loctite retained Flywheel Screws with Nordloc washers retained Flywheel Screws, In-Situ.

- i) Remove the alternator stator assembly to allow access to the flywheel mounting screws.
- ii) Remove each screw. Note that as Loctite is used on the screws (excluding those installed with Nordloc washers) they may be difficult to remove and care must be taken not to break the screw off. A pencil-type gas burner with a small flame or electric heat gun may be used to heat the screws and soften the Loctite. More guidance is given in the Overhaul manual JEM0001. If in doubt, contact Jabiru Aircraft or our local representative for advice.
- iii) If a broken screw is found it must be removed using a “Screw Extractor - “Rigid” or similar tool (Available in Australia from “Blackwoods” stores). Note that this process is not straightforward and Jabiru Aircraft recommend only experienced mechanics attempt it. Once the broken screw is removed the thread and hole must be cleaned as detailed below.

### **CAUTION**

#### **DO NOT TURN ENGINE CRANK WITH FLYWHEEL BOLTS REMOVED.**

The flywheel screws also retain the valve timing gear which is located inside the gear case and is not visible without disassembling the engine. Turning the crank with the flywheel removed will result in lost timing. Once lost, re-setting the timing requires significant disassembly of the engine and is a large job suitable for experienced technicians only.

- iv) If the flywheel doesn't have dowels fitted always keep at least one temporary bolt screwed into the crankshaft. This will prevent the timing gear from moving out of alignment. Otherwise make sure dowels are flush or below flywheel face.
- v) Clean out each thread in the crankshaft using a thread tap (either ¼” UNF, 5/16 UNF or 3/8 UNF depending on bolt size). Use only hand tools – do not fit the tap in an electric drill or similar as this reduces control and makes damage to the thread much more likely. Blow out the hole using compressed air.
- vi) Using a new flywheel screw, hand insert it into each crankshaft thread for three turns, then wriggle it. The screw should be a firm fit with minimal movement. If the tip of the screw

## Jabiru Service Bulletin: Jabiru Engine Flywheel Attachment

JSB 012-9

30<sup>th</sup> November 2022

moves by more than 1.5mm then the hole in the flywheel has been elongated and must be replaced. See overhaul manual in this situation.

- vii) Install the Steel wear plate. Note: if you have a flywheel with a steel centre “Starfish” a steel wear plate is not required.
- viii) Install new Cap screws with Nordloc washers and torque up as described in the Overhaul manual JEM0001 (check for latest issue). Note that only new “Unbrako” or “Brighton Best 1960-Series” screws are to be used.

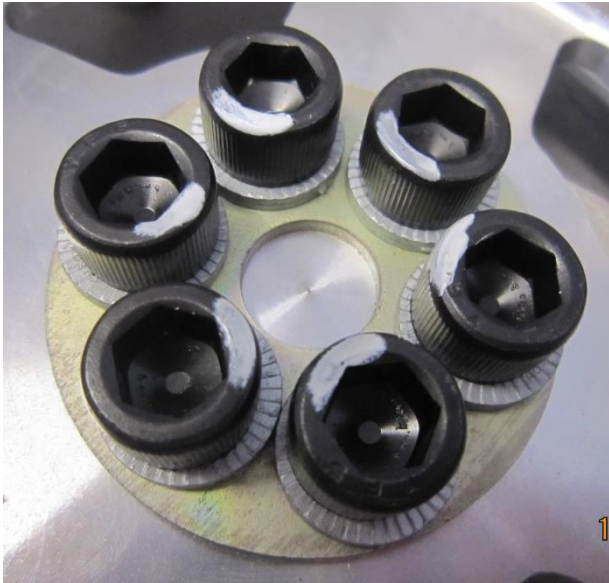


Figure 3: Flywheel with Aluminium centre and steel wear plate.

- ix) Re-install the alternator stator in accordance with the details given in the current engine Overhaul manual. Set the gaps between the ignition coils and the flywheel magnet plates in accordance with the details given in the Engine maintenance manual.

### 5.5 Procedure – Replace Flywheel Screws (Engines upgraded as per 5.4 )

- ii) Conduct flywheel screw replacement using the procedure and interval specified in the engine maintenance manual JEM0002(Gen 3) or JEM0005 (Gen 4) (check for latest issue).Airworthiness Note:

### 5.6 General

Where required, work called for by this Bulletin must be carried out by authorised personnel only. In Australia this generally means the original builder of an Experimental-category aircraft (either RA-Aus or VH registered), an RA-Aus Level 2 holder for other RA-Aus aircraft or a Licensed Aircraft Maintenance Engineer (LAME).

On completion of the work, the authorised person must note the completion of the actions required by this bulletin in the aircraft’s maintenance logbook. This note should refer to the completion of maintenance requirements of this Service Bulletin, indicate if any loose or broken screws were found, indicate the date of the work and the identity (including licence number where appropriate) of the person carrying out the work.

# Jabiru Service Bulletin: Jabiru Engine Flywheel Attachment

JSB 012-9

30<sup>th</sup> November 2022

## 5.7 Manuals

The changes to maintenance procedures detailed below are being incorporated into all Jabiru Engine Instruction & Maintenance Manuals. Copies of the latest versions of these manuals are available from the Jabiru Aircraft web site [www.jabiru.net.au](http://www.jabiru.net.au). As all the engine manuals are living documents which are regularly updated to include information developed during recent operational experience it is strongly recommended that all owners update their manuals to the latest revision. Manuals for solid lifter engines are also being maintained with the latest updates and are available to owners.

## 5.8 General Engine Maintenance Notes

- Always take care while working around the propeller – ensure the ignitions are turned OFF and that no-one is in the cockpit while working on the engine.
- Always use a good quality tension wrench.
- It is strongly recommended to check the accuracy of adjustable-type tension wrenches at least every year.
- The flywheel screws also retain the valve timing gear, so turning the crank with the flywheel removed will result in lost timing. Once lost, re-setting the timing requires significant disassembly of the engine and is a much larger job.

## 6 Reporting

To help monitor engines in service Jabiru Aircraft Australia requests that any engines found with broken flywheel screws be reported to us. Owners should contact Jabiru Aircraft (or our local representative) via email or fax:

Email: [info@jabiru.net.au](mailto:info@jabiru.net.au)  
Fax: +61 7 4155 2669

Please include the following details:

- Engine Serial Number
- Engine Time Since Overhaul
- Aircraft use & Maintenance (i.e. private use, maintained by owner **or** flying school use, maintained by RA-Aus Level 2).
- Propeller type
- Propeller extension type
- Any other relevant information.