



Pre-Paint>Fuselage> Fit seatbelt anchors

Issue Revision Table

Issue	Date:	Change(s):	Issued by:
1			
2			
3	Oct 2022	Adopt "Section Only" Manual System, Add Issue Revision Table and model applicability. Add rear view photo of seat belt anchor installation	SW SW

Model Applicability

Aircraft Model	J-160	J-170	J-230	J-430
Document Applicability			Yes	

Pre-Paint>Fuselage>Interior>Fit seatbelt anchors

Objectives of this task:

This task shows how to fit the seatbelt anchors. While this is quite a simple task it is also an extremely important one – the seat belts *must* be anchored correctly because if you ever *really* need your seat belt (and here’s hoping that you never do) it must be attached to the airframe in the designed manner for maximum safety.

The photos that follow are of the pilot’s seat: the same applies to the other seat but in reverse.

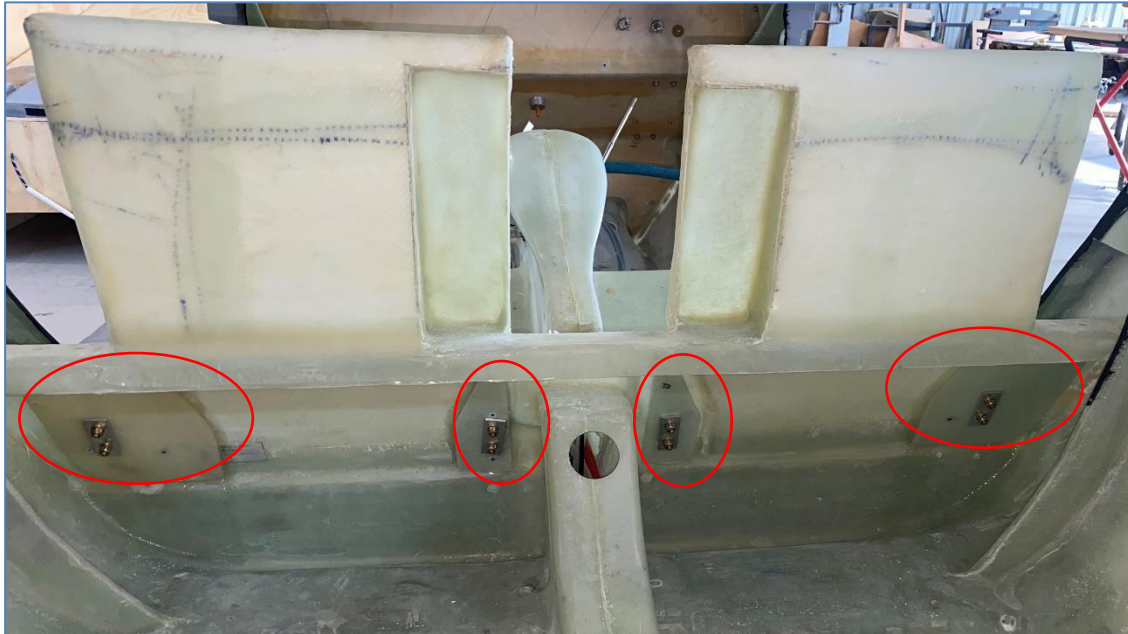
Materials required:

Card # 9J ‘Seatbelts’

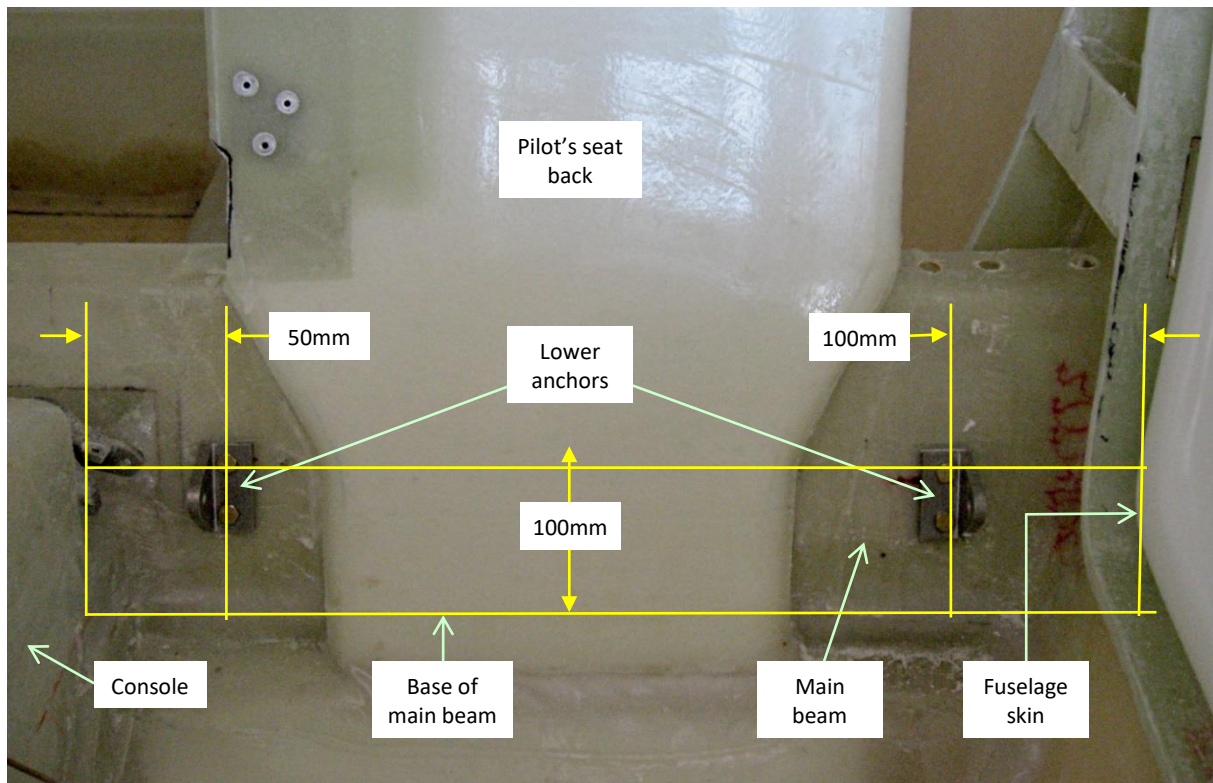


Bottom anchor brackets

Both bottom anchor brackets are attached to the main beam that runs behind the seats.



On the rear sides of the seat back beam areas, use a resin and flock mix to bond the oblong fiberglass backing plates to the main beam, positioning as per the photo below. Use 3/4" 8 g s/s self-tapping screws from the front side to pull up the reinforcing plates while curing. Clean up the excess flock from around edges of the backing plates. Remove the screws after cured and fill the screw holes with flock mix.



At the front side, mark a horizontal line 100mm up from the base of the main beam on each side of each seat, and then mark a vertical line 50mm out from each side of the centre console. Mark another vertical line 100mm in from the fuselage skin.

Hold a bottom bracket inside and below where each pair of lines meet and drill a 3/16" hole through the top hole and slip a bolt through and then check each anchor bracket for square and drill the bottom hole.

Fix each anchor bracket in place with AN3 bolts through the bracket, the beam, the fiberglass backing plate, the rectangular backing plate, a washer and a Nyloc nut. Tighten firmly.



Top anchor brackets

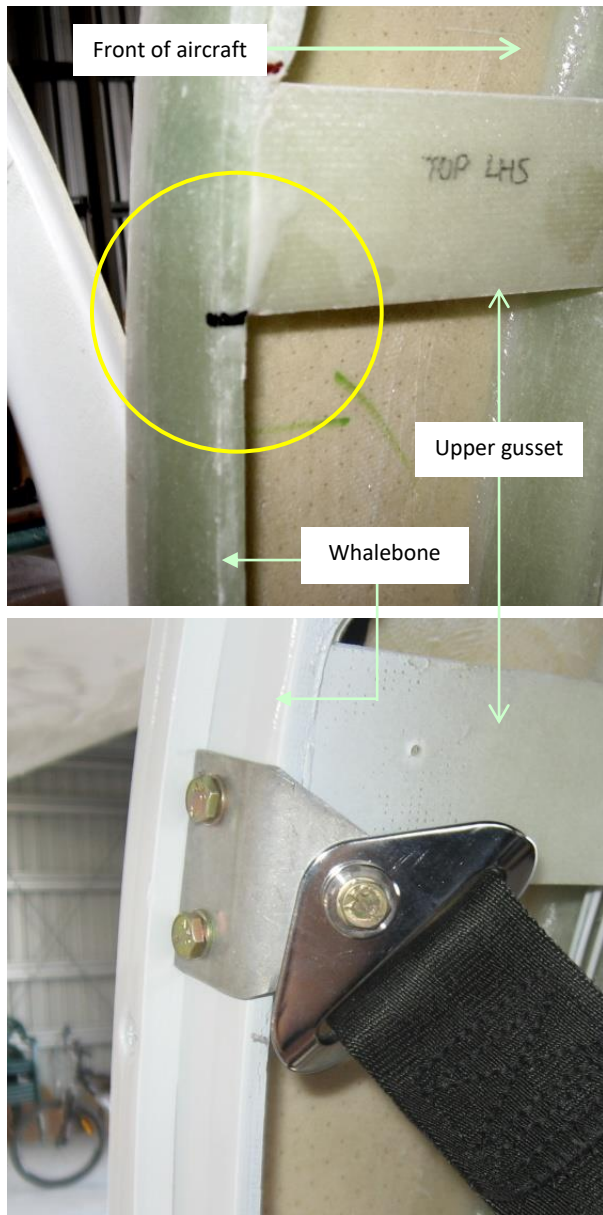
The top anchor brackets mount behind the whalebone with the centre of the bracket precisely level with the bottom of the upper door compression gusset. Mark as shown in the photo at right.

Hold the bracket in position and drill a 3/16” hole at the top of the bracket and slip a bolt through then line up the bottom of the bracket and drill the second hole.

The top bracket will not be finally fitted until the aircraft has been painted and the upholstery has been installed.

Pre-fit the top bracket with an AN3 bolt through the bracket, the whalebone, the backing washer and a Nyloc nut as shown at right.

Remove and store the top brackets or later fitting.



This completes the *Pre-Paint>Fuselage>Interior>Fit seatbelt anchors* task.