

SENENICH PROPELLER CO., INC.

AREA CODE 813
PHONE - 752-3711
FAX - 752-2818



2008 WOOD COURT
PLANT CITY, FL USA
33563

See us on the Web @ www.sensenich.com

SERVICE BULLETIN SB 10-07-21

EFFECTIVE DATE: 7-21-10

SUBJECT: Inspection of blade shanks for possible cracks

AFFECTED PROPELLER MODELS: All R64Z, L62P, and R62H composite propeller blades used on Jabiru series engines

AFFECTED SERIAL NUMBERS: All Jabiru blade serial numbers below 25,400

AFFECTED PUBLICATIONS: N/A

REASON: Sensenich has received reports of paint cracks on the shanks of Jabiru composite propeller blades. Cracks have been found on the leading and trailing edge portions of the shank, where the blade shank exits the hub and transitions into the blade airfoil. **See Figure 1. and Figure 2.**

Cracks examined to date have not progressed deeper than the outer composite ply, but the crack location warrants regular preflight inspection to detect possible crack formation and propagation.

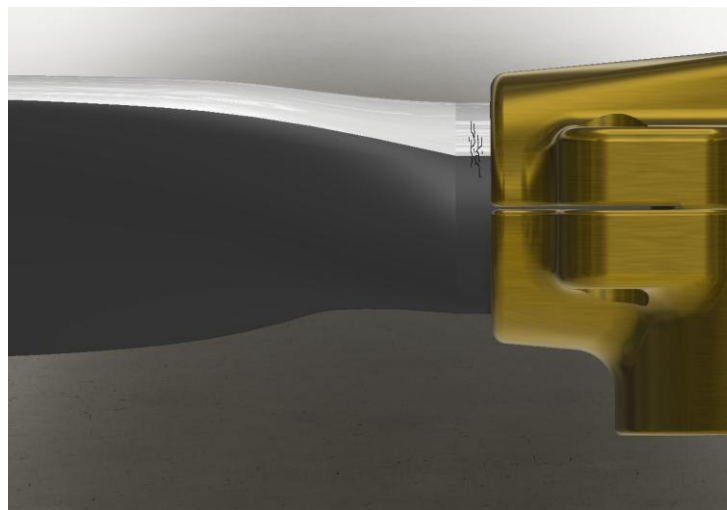


Figure 1. Side View of Jabiru propeller blade with shank paint cracks

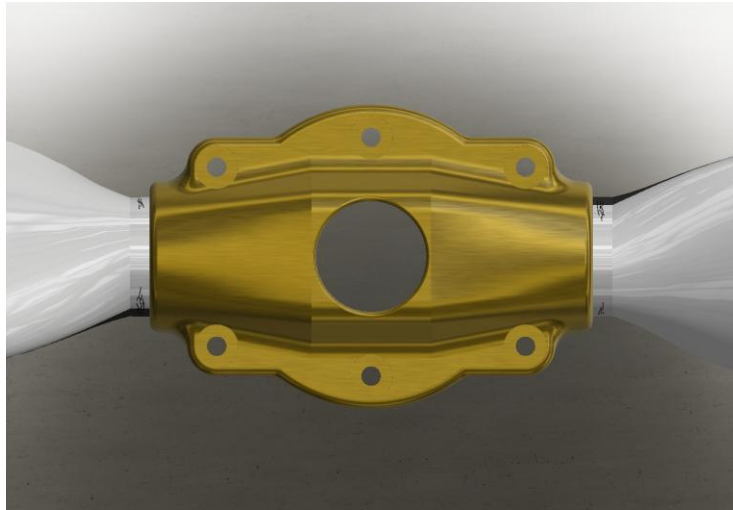


Figure 2. Top View of Jabiru propeller with shank paint cracks

COMPLIANCE: -*Inspect blade shanks prior to each flight.* Run your fingers around the root where the blade exits the metal hub, and check for loose fibers, cracks, or rough areas.
-Notify Sensenich of any occurrences and return for evaluation.

NOTE: Composite aircraft blades that *are NOT* affected by this Service Bulletin include:

- all propellers for Rotax engines
- all propellers for Eggenfellner engines
- all propellers for Continental and Lycoming engines.

Contact Sensenich for more information.