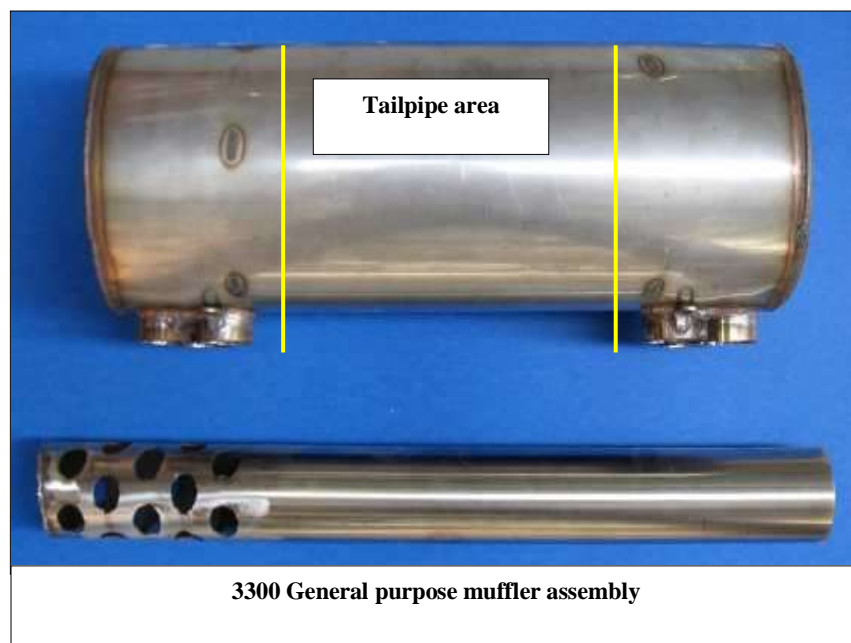


### General purpose tailpipe fitting

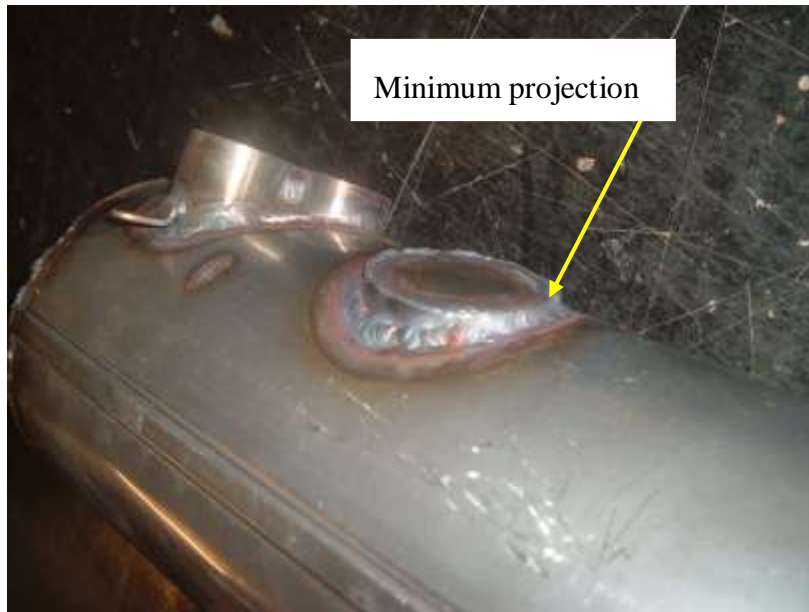
If you have purchased a Jabiru engine to fit to some other type of aircraft you will have been supplied with a stainless steel muffler that has no outlet and a length of stainless steel exhaust tailpipe with a blanked end and a number of drilled holes as shown below.

The purpose of supplying the muffler and tailpipe unfinished in this manner is to allow the tailpipe to be positioned to suit your intended installation.

The muffler body has been designed to fit onto the header pipes from the cylinder heads and retained with springs as shown below in the standard installation. Once you have mounted your Jabiru engine to your aircraft, fit the muffler body to the engine and then decide where you want the tailpipe to point.



The process of fitting the tailpipe to the muffler body is straightforward: cut a hole on each side of the muffler body in the marked “tailpipe area”, to allow the tailpipe to pass through the muffler at the desired angle. The need to keep the tailpipe within the "tailpipe area" is to ensure the tail pipe is clear of the baffles in the muffler body. Test fit and tack the tailpipe in place, then remove the muffler and fully weld the tailpipe to the muffler body – the blanked end of the tailpipe to have minimum projection through the muffler body as shown in the photo below, while the open end should be positioned well outside of the cowling/fuselage and away from any openings into the cabin. The outlet position must be chosen carefully to prevent exhaust gas entering the cabin. Carbon monoxide testing must be carried out during initial test flights to confirm exhaust gas is not entering the cabin.



The photo below shows a standard Jabiru 3300 installation to illustrate the components. In a non-standard installation the only difference will be the placement of the tailpipe.

