

**SERVICE BULLETIN:** JSB 011-1  
**Issue:** 1  
**Date:** 16<sup>th</sup> Aug 2005  
**Subject:** Inner Seat Belt Attachment

**1. Applicability:**

Jabiru LSA, SP, UL and early J160 models (including variant models such as Calypso) using the seat belt attachment system shown in Figure 1 below.

**2. Background:**

In two recent accidents involving Jabiru LSA aircraft the inboard attachment bolt for one of the main undercarriage legs has been torn out through the fuselage structure. Some Jabiru models (see above) use this bolt as the fastener for the inboard lower seat belt attachment. Refer to Figure 1 below.

If an aircraft with this belt installation were involved in a similar incident there is a chance that high loads could be applied to the belt, causing injury to the occupant.

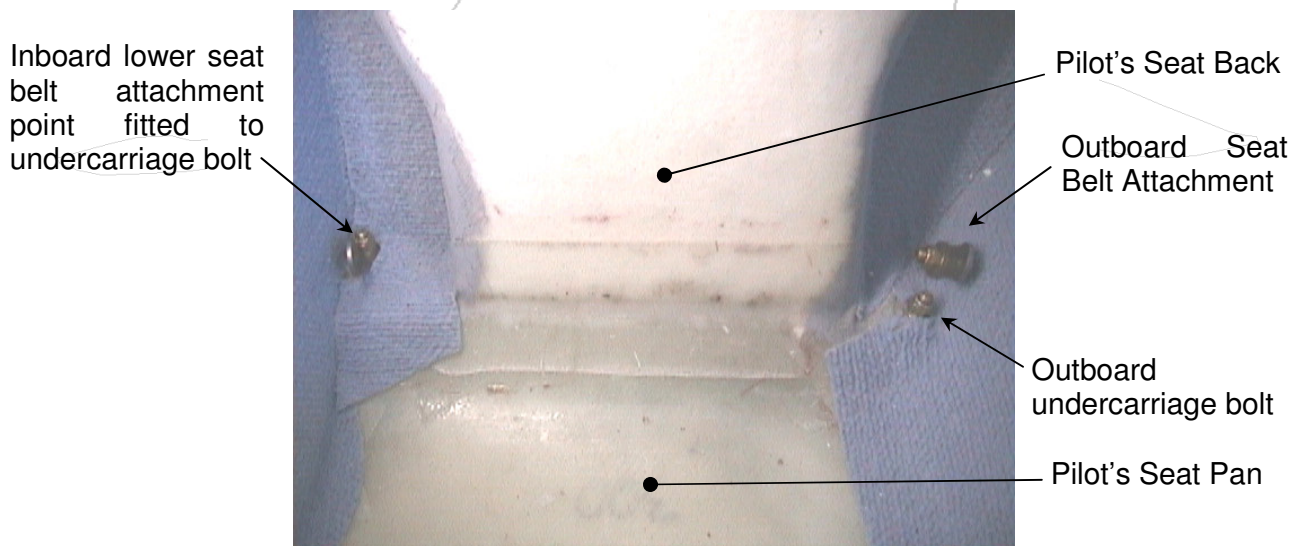


Figure 1. Lower Seat Belt Attachment

**3. Recommendations:**

Replace the existing seat belt attachment with a new point which is separate from the undercarriage mounting. A procedure for this work is given below.

## Jabiru Service Bulletin: Lower Seat Belt Attachment

JSB 011-1

16<sup>th</sup> Aug 2005

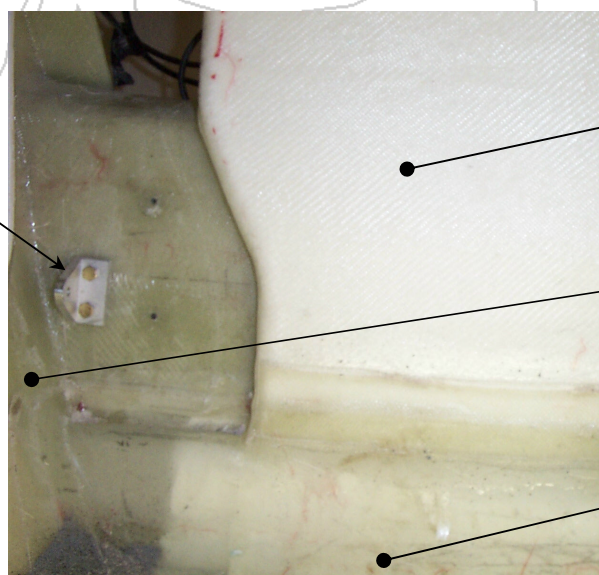
### 4. Compliance:

All aircraft which use the seat belt attachment shown above must be modified within 20 flight hours.

### 5. Procedure:

- i) Note that all work must be conducted by an authorised person, such as the kit builder or a holder of an Australian Level 2 Maintenance Authority (or equivalent under local regulations).
- ii) Remove the lower inboard seat belt attachment from the lug fitted to the undercarriage bolt (Refer to Figure 1).
- iii) Place a stand under one wing and lift the wheel clear of the ground.
- iv) Remove the nut & seat belt lug from the inboard undercarriage bolt.
- v) Add washers to account for the removal of the lug then fit a new Nylock nut to the undercarriage bolt.
- vi) Remove the wing stand, then repeat the above procedure for the other side of the aircraft.
- vii) To fit the new seat belt attachment access is required to the rear of the moulded cross beam which runs across the fuselage behind the seat backs. In most models this will require the fuel tank straps to be loosened and the tank moved back out of the way. In some cases, complete removal of the tank may be necessary.
- viii) Place the seat belt mount lugs (P/No. 5000094) on the moulded cross beam between the seat back and the centre console as shown in Figures 2 & 3 below.

Seat Belt Lug (P/No. 5000094). Place within 25mm (1") of the side of the centre console.



Pilot's Seat Back

Side of centre console.

Pilot's Seat Pan

Figure 2. New Seat Belt Attachment Installed

## Jabiru Service Bulletin: Lower Seat Belt Attachment

JSB 011-1

16<sup>th</sup> Aug 2005

- ix) Match drill the reinforcing plate to the holes drilled above.
- x) Prepare the bonding surfaces of the reinforcing plate and the moulded beam. (Refer to details given in Figure 3 below).
- xi) Bond the plate to the rear face of the beam using Epoxy resin (As supplied by Jabiru, or alternatively, Huntsman LY3600 is equivalent) with cotton flock filler. Paint all bonding surfaces with raw resin before assembling. Use the through bolts from the seat belt attachments to hold the reinforcing plate to the beam while the resin cures. Note that in cold ambient temperatures (below 15°C) it will be necessary to heat the resin to allow it to cure.
- xii) After the resin has cured, tighten the through-bolts for the new seat belt mounts.
- xiii) Fit the seat belts to the new lugs.
- xiv) Annotate the aircraft's maintenance log to show that Jabiru Service Bulletin JSB 011 has been carried out.

# Jabiru Service Bulletin: Lower Seat Belt Attachment

JSB 011-1

16<sup>th</sup> Aug 2005

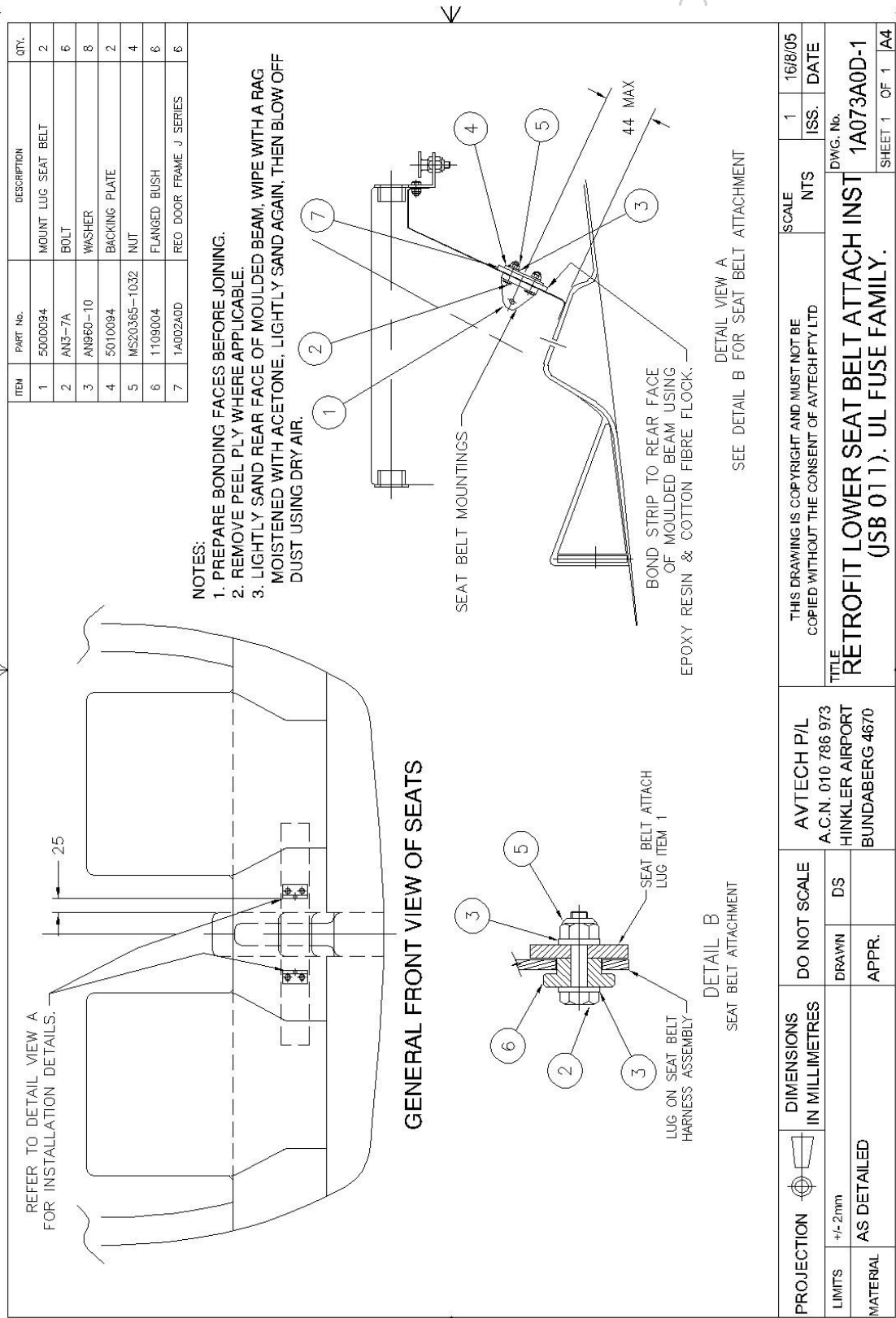


Figure 3. Seat Belt Attachment Installation Detail